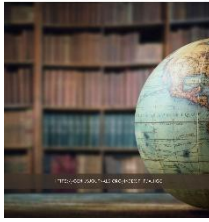


Eurasian Journal of History,
Geography and Economics

Territorial Features In The Periodic Development Of Labor Resources (On The Example Of The Jizzakh Region Of The Republic Of Uzbekistan)

**Ga'pporov Azimbek
Nazarovich**

Senior lecturer at Jizzakh State Pedagogical University
azimbekgapparov@mail.ru

ABSTRACT

Labor force utilization is a topic that never loses its relevance in the country's economic and social development and in matters related to the territorial organization of the population. Therefore, among the key indicators of national development, it is necessary to regularly analyze such indicators as employment, unemployment, and job creation for the economically active population. This article presents a periodic comparative analysis of labor force indicators in the Republic of Uzbekistan and examines the issue of labor force utilization in regions with specific characteristics, using the Jizzakh region as an example.

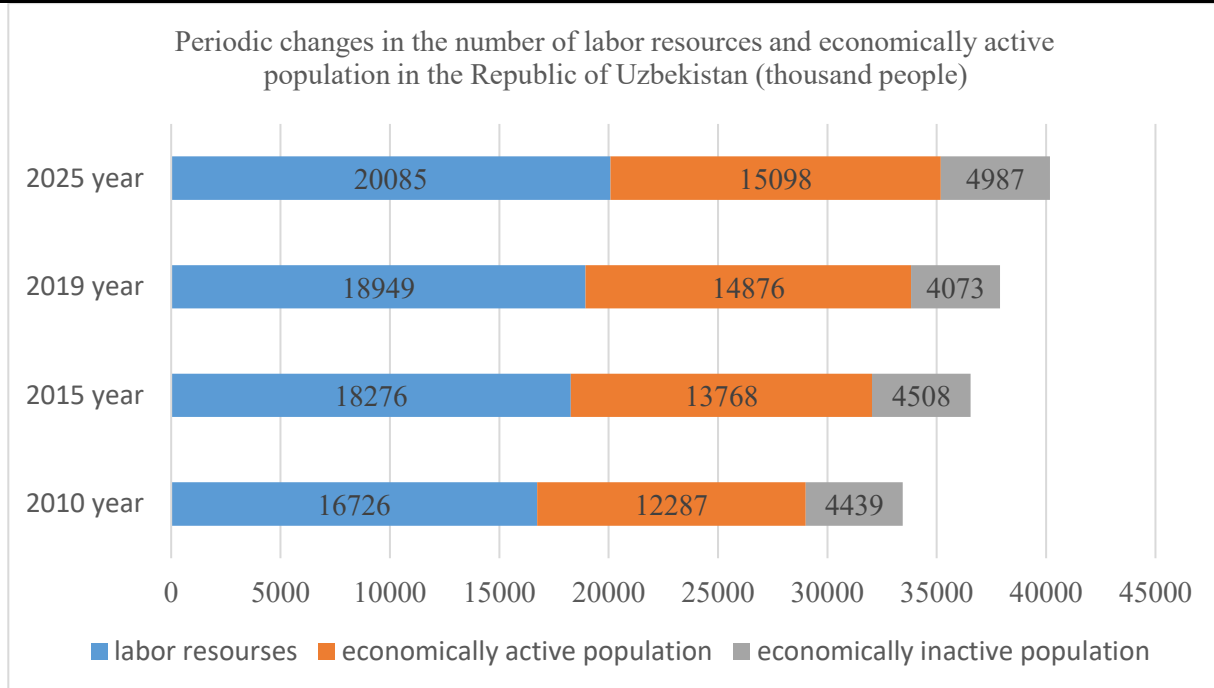
Keywords:

labor force, economically active population, economically inactive population, unemployment, jobs, regional economy.

Factors that play a decisive role in the economic and social development of any country can achieve positive results if they interact harmoniously. Given that the most important of these factors is labor force, studying and managing the size and composition of the country's working-age population is an urgent task. It is worth noting that in addition to indicators such as the size and composition of the working-age population, there are a number of important aspects whose neglect leads to a failure to understand many problems in a timely manner[1]. These include the economically active portion of the working-age population (i.e., those actually employed), the proportion of persons with disabilities, the number of unemployed, those on sick leave, and labor force data that is statistically falsified.

In recent years, the labor force in the Republic of Uzbekistan has been steadily growing, primarily due to natural population growth.

While recognizing the importance of analyzing the impact of natural and mechanical growth on the country's labor force, we consider it necessary to also consider other aspects of this indicator, namely its territorial distribution, sectoral structure, and the territorial characteristics of the total economically active population. These indicators reflect the current state and potential for utilization of the labor force. As noted above, the labor force in the country is steadily growing. While there are no serious problems meeting human resource needs for the development of the national economy, it should also be noted that, in real terms, the economically active population differs somewhat from the total labor force. This is clearly evident when periodically comparing both indicators.



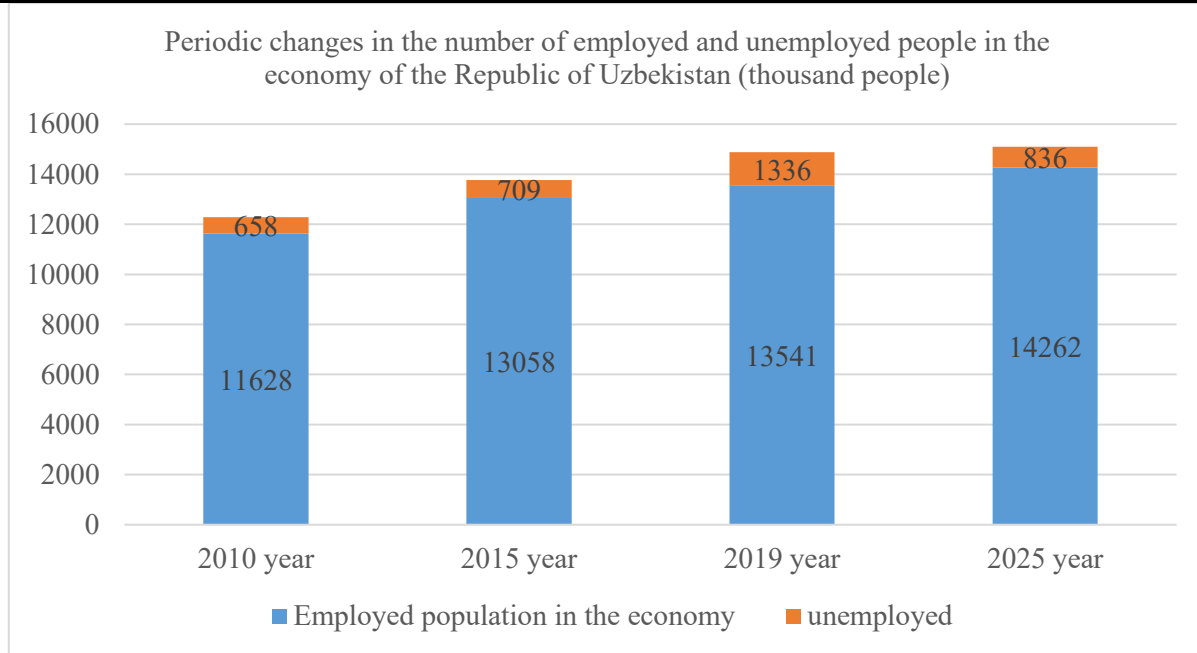
Picture 1.

As the diagram shows, the economically active population in the country is steadily growing and, on average, differs from the total labor force by 4.5 million people. It is also important to determine which groups of the population primarily comprise the economically inactive population. Factors such as the extent to which unemployment has been resolved in the country, the employment rate of skilled specialists, and the proportion of the population working before or after working age play a decisive role in this regard[2].

According to the Statistical Committee of Uzbekistan, the employment rate in the country has averaged 68% in recent years. By focusing on changes in the economically inactive population, one can assess the characteristics of

the country's employment by examining the number of officially and unofficially unemployed individuals and their potential for economic activity. Of course, the number of the economically inactive population does not fully reflect the number of unemployed individuals. Therefore, statistical data indicate the number of unemployed individuals in the country primarily based on the size of the workforce (picture 2).

It can be said that the number of unemployed individuals is a constantly changing indicator. Therefore, it is appropriate to show periodic changes in this indicator in comparison to the number of employed individuals in the economy.



Picture 2.

Based on these indicators, it can be concluded that in recent years the country has been effectively working to reduce unemployment and ensure employment, particularly for young people. As a benchmark, the average number of unemployed people over the past 15 years has been 960,000. It is important to examine the territorial aspects of this indicator, as measures aimed at addressing unemployment in general are reflected at the regional level.

The economically active population figures are naturally higher in regions with larger populations, with the Fergana, Samarkand, and Andijan regions and the city of Tashkent leading the way. The unemployment rate in these regions is also higher than in other regions. In particular, it has been noted that in some regions, it is so high that it requires drastic measures. For example, in the last quarter of 2025, the unemployment rate in the Fergana region was 6% of the economically active population.

Organizing employment and addressing unemployment in densely populated regions requires extensive efforts and a strategic approach. The emergence of unemployment problems in regions of Uzbekistan with relatively large territories and relatively small populations demonstrates the country's lack of an effective approach to unemployment. The region's territorial structures and

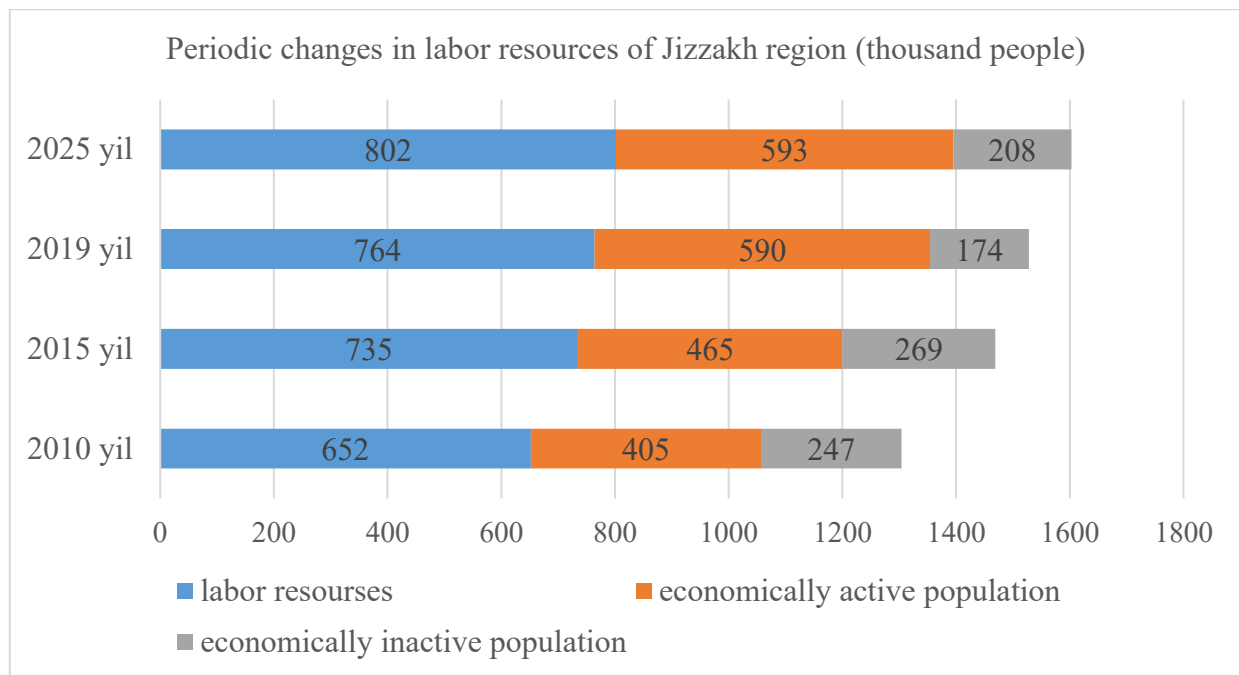
infrastructure make it relatively easy to provide employment for a small number of people. One such region is Jizzakh Region. Jizzakh Region is distinguished by its relatively large territory and unique natural conditions. In particular, it is emphasized that the determining factors in the region's economic and social development are the economic systems of the population in the mountainous and foothill areas, where the population has lived for a long time, and in the recently developed desert regions.

As in all regions of the country, the population of Jizzakh Region is also experiencing population growth. This, in turn, is reflected in the utilization of the labor force. It is advisable to analyze the characteristics of the labor force and its utilization in the region, primarily to understand the structure and key aspects of the regional economy. Overall, agriculture occupies a leading position in the region, with significant attention being paid to the development of the industrial and service sectors. This, in turn, demonstrates the consistent development of a unified system for ensuring employment and addressing the employment issue. The construction of industrial enterprises with national-scale production and other promising plans indicate that the region will become one of the country's key economic centers in the future.

At the same time, it should be noted that unemployment is an urgent issue, and the

ineffectiveness of current measures will lead to further problems in the future. Therefore, the ongoing study of the region's labor force status is one of the key measures to prevent the worsening of unemployment.

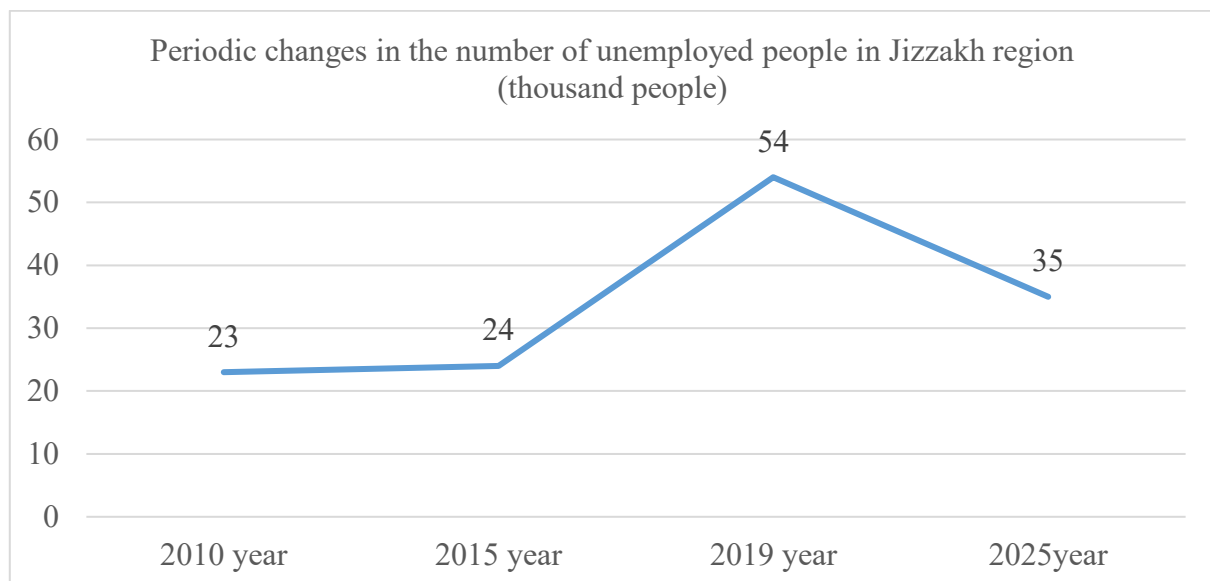
The region's population this year is 1,538,000. A periodic comparative study of the labor force and related data on this scale will help to form an understanding of the state of the region's economic and social development.



Picture 3.

Clearly, alongside the quantitative increase in the region's labor force, the corresponding indicators are also growing. The decline in the number of economically inactive people in

recent years indicates effective job creation efforts in the region, and therefore periodic changes in the unemployment rate are the main indicator of this situation.



Picture 4.

Over the past 15 years, the number of unemployed in the region averaged 37,000

people. This year, the unemployment rate is 4.3% of the region's total labor force and 6% of

the economically active population (Figure 2). While this may not seem like a significant figure, until a reliable system for preventing unemployment is established, there is always a risk of a sharp increase in this number [3].

It is well known that employment security depends largely on the level of development of economic sectors. Therefore, the distribution of the region's population across economic sectors provides the basis for drawing conclusions about the future state of job creation in the region.

References

1. Soliyev va b. "O'zbekiston hududlari iqtisodiy va ijtimoiy rivojlanishi" T. 2011 y.
2. Materials of the Statistics Committee of Uzbekistan. 2025.
3. Materials of the Jizzakh Regional Statistics Department. 2025.